

Mighty Light

A compact source of low-noise white light with versatile output modules

The Mighty Light is a compact white light source that is ideal for microscopy, spectroscopy, machine vision, and spectral imaging applications. The Mighty Light integrates a tungsten halogen bulb and power supply with a control board that delivers uniquely low-noise output. A series of pre-aligned bolt-on accessories allow the broadband output to be coupled into a fiber or fiber bundle, homogenized and collimated, directly coupled into a microscope, or integrated with our unique Wavelength Selector devices to create a tunable, monochromatic beam. Click [here](#) for videos and more information.

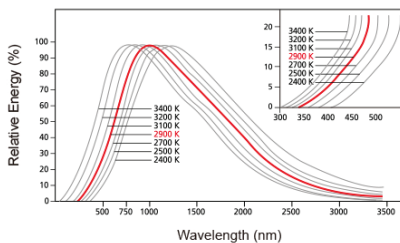
/ Specifications

- Type of Lamp: Tungsten-Halogen
- Lamp Power Output: ~ 2 W
- Power Stability: $\pm 0.5\%$
- Bulb Lifetime: ~ 1000 hours
- Color Temperature : 2900 K
- Dimensions: 125 mm x 75 mm x 70 mm
- Electric Requirement : 100-240 V AC, 50-60 Hz
- Power Supply : 9V DC at 2A

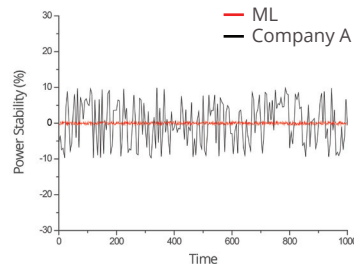


Mighty Light
ML

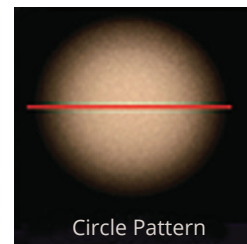
/ Main Features



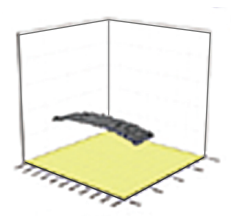
Broad continuous spectrum



Low noise output : ($\pm 0.5\%$)



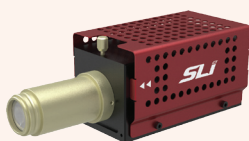
Circle Pattern



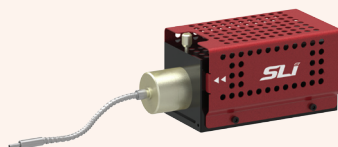
Line Pattern

Uniform intensity when collimated

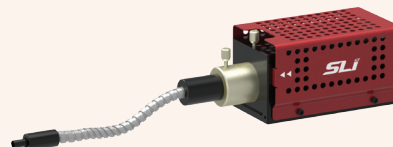
Accessories



Collimator
ML-CA



Fiber Adapter
ML-FA



Light Guide Adapter
ML-LGA



ML-Wavelength Selector